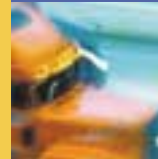


Quest Diagnostics

is dedicated to providing comprehensive solutions for all your drug testing needs.

For more information on how Quest Diagnostics can help achieve your drug testing goals, visit us online at www.questdiagnostics.com, contact your Quest Diagnostics representative or call our customer service department at 800-877-7484.

- For further general information on common drugs of abuse please refer to the following:
- U.S. Department of Health and Human Services and SAMHSA's National Clearinghouse for Alcohol & Drug Information – List of Drugs: <http://store.health.org/catalog/drugs.aspx>
 - NIDA (National Institute on Drug Abuse) Main Page: <http://www.nida.nih.gov>
List of Drugs: <http://www.drugabuse.gov/Drugpages>
 - Medical Review Officer Handbook, 8th Edition, Theodore F. Shults, MS, JD, Quadrangle Research LLC, 2002



Common Drugs of Abuse

Quest Diagnostics – the nation's leading drug tester



With drug abuse on the rise, the chances are your business is at risk

Quest Diagnostics understands the financial, legal and moral impact that employee substance abuse can have on your organization, from accidents and increased absence, to lower productivity and the rise in frequency of workers' compensation claims.

As a result we are committed to providing solutions that help you keep substance abuse out of your workplace. That's why, each year, Quest Diagnostics performs more than 8 million drug tests. This makes us the leading provider of drug testing services in the nation.

Drug abuse is becoming more prevalent. Left unchecked, it can seriously compromise the integrity and stability of your workplace. For example:

- The percentage of the U.S. population using illegal drugs increased from 6.3% in 1999 and 2000 to 7.1% in 2001; this translates to 15.9 million Americans. (Substance Abuse and Mental Health Services Administration – SAMHSA)
- Nearly 7% of adults employed full time and 9% of those employed part time currently use illegal drugs. (SAMHSA)
- More than 70% of substance abusers hold jobs. (American Council of Drug Education)
- Americans consume 60% of the world's production of illegal drugs. In fact, 23 million individuals use marijuana at least four times a week and 6 million regularly use cocaine. (American Council for Drug Education)



Drug abuse

a drain on business and the economy

- Drug use in the workplace costs employers approximately \$81 billion annually in lost productivity. (The U.S. Department of Labor)
- 55% of the costs of substance abuse are borne by both employers and society at large. (Center for Substance Abuse Research, University of Maryland)
- Employees who abuse drugs or alcohol are 10 times more likely to miss work, nearly 4 times as likely to be involved in on-the-job accidents and 5 times more likely to file a workers' compensation claim. They are also responsible for 40% of all industrial fatalities, 33% less productivity and generate health care costs that are three times as high as other co-workers. (American Council for Drug Education)



Quest Diagnostics

your partner for effective and reliable drug testing

Quest Diagnostics is committed to supporting the well being and welfare of your business.

We offer a full line of drug testing products and services that provide the critical information you need to make confident and informed decisions about prospective and current employees.



Common Drugs of Abuse

Quest Diagnostics is dedicated to providing comprehensive solutions for all your drug testing needs.

For more information on how Quest Diagnostics can help achieve your drug testing goals, visit us online at www.questdiagnostics.com, contact your Quest Diagnostics representative or call our customer service department at 800-877-7484.

	• What to Look For	Δ Physical Symptoms	Dangers	◇ Substances	▲ Time Detectable
Amphetamines <ul style="list-style-type: none"> • Uppers • Speed • Meth • Whites • Dexies • Crank • Black Beauties • Benny • Crystal • Jelly Beans • White Cross 	<ul style="list-style-type: none"> • Tablets of varying colors, possible chain-smoking 	Δ Long periods without rest or sleep, loss of appetite, anxiety, irritability, rapid speech, tremors, mood elevation	Disorientation, severe depression, paranoia, possible hallucinations, increase in blood pressure, fatigue	◇ Methamphetamine, Amphetamine	▲ Urine: 1 to 3 days Hair: up to 90 days (depending on hair length) Oral Fluid: 24 to 36 hours
Cocaine <ul style="list-style-type: none"> • Coke • Crack • Snow • C • Flake • White Candy • Freebase • Toot • Blow • Nose Candy • Rock 	<ul style="list-style-type: none"> • Glassine envelopes, razors, small spoons, bitter white crystalline powder, granular rocks 	Δ Short-lived euphoria changing to depression, irritability, nervousness, tightness of muscles	Shallow breathing, fever, anxiety, tremors, possible death from convulsions or respiratory arrest	◇ Benzoylcegonine	▲ Urine: 1 to 3 days Hair: up to 90 days (depending on hair length) Oral Fluid: 24 to 36 hours 
Marijuana <ul style="list-style-type: none"> • Dope • Pot • Reefer • Joint • Smoke • Weed 	<ul style="list-style-type: none"> • Plastic baggies, rolling paper, "roach" clips, odor of burnt rope 	Δ Altered perception, dilated pupils, lack of concentration and coordination, craving for sweets, increased appetite, laughter	Psychological dependence, increased heart rate, impaired short-term memory, anxiety, lung damage, possible psychosis with chronic use	◇ 11-Nor-delta-9-tetrahydrocannabinol-9-carboxylic acid ▲ Urine - occasional use: 1 to 3 days; habitual/chronic use: up to 30 days Hair: up to 90 days (depending on hair length) ◇ Delta-9-tetrahydrocannabinol ▲ Hair: up to 90 days (depending on hair length) Oral Fluid: less than 24 hours	
Opiates <ul style="list-style-type: none"> • Heroin (Smack, Horse, Junk, China White) • Morphine (M, Miss Emma) • Codeine (School Boy) • Hydrocodone (Vicodin) • Hydromorphone (Dilaudid) • Oxycodone (Percocet, Percodan, Oxycotin) • Oxymorphone (Mumorpham) 	<ul style="list-style-type: none"> • Glassine envelopes, needles and syringes, caps or spoons, tourniquets, needle marks on arms 	Δ Insensitivity to pain, euphoria, sedation, nausea, vomiting, itchiness, watery eyes, running nose	Lethargy, weight loss, hepatitis, slow and shallow breathing, possible death 	◇ Codeine, Morphine ▲ Urine: 1 to 3 days Hair: up to 90 days (depending on hair length) Oral Fluid: 24 to 36 hours ◇ Hydrocodone, Hydromorphone, Oxycodone Oxymorphone, 6-monoacetylmorphine ▲ Urine: 1 to 3 days Oral Fluid: 24 to 36 hours	
Phencyclidine <ul style="list-style-type: none"> • Angel Dust • Devil Stick • PCP • Dummy Dust • Wack 	<ul style="list-style-type: none"> • Liquid capsules, white or brown powder on paper stamps, sugar cubes, cigarettes, joints, injection paraphernalia 	Δ Increased pulse and heart rate, blood pressure and temperature, possible mood and perception alteration, paranoia, panic, anxiety, nausea, tremors, suicidal urge	Unpredictable behavior, flashbacks, possible emotional instability and psychosis, hallucinations	◇ Phencyclidine ▲ Urine - occasional use: 1 to 5 days; habitual/chronic use: up to 30 days Hair: up to 90 days (depending on hair length) Oral Fluid: 24 to 36 hours	
MDMA <ul style="list-style-type: none"> • Ecstasy • Adam • XTC • X • Hug drug • Beans • Love drug • Lover's speed 	<ul style="list-style-type: none"> • White odorless crystalline powder, tablets in various colors and stamped with various patterns 	Δ Euphoria, empathetic and unusually warm towards people, touch and sight senses often heightened	Tachycardia, hypertension, hyperthermia, mydriasis, diaphoresis, stimulant, entactogenic effects, visual hallucinations	◇ 3-4 methylene dioxymethamphetamine (MDMA) 3-4 methylene dioxymphetamine (MDA) ▲ Urine: 2 to 4 days Hair: up to 90 days (depending on hair length) Oral Fluid: 24 to 36 hours	
Barbiturates <ul style="list-style-type: none"> • Downers • Dolls • Reds • Tuinal • Rainbows • Yellows • Blues • Goofballs • M&M's • Red Devils 	<ul style="list-style-type: none"> • Capsules of varying colors, longer periods of rest or sleep, dizziness, cold and clammy skin 	Δ Depression, decreased alertness and muscle control, intoxication and slurred speech, drowsiness	Rigidity and painful muscle contraction, emotional instability, possible overdose and death, especially when mixed with alcohol	◇ Secobarbital, Butalbital, Pentobarbital, Amobarbital Phenobarbital ▲ Urine (all except Phenobarbital): 1 to 3 days (short acting) Urine (Phenobarbital): 1 to 3 weeks	
Benzodiazepines <ul style="list-style-type: none"> • Downers • Tranqs 	<ul style="list-style-type: none"> • Pills and injection paraphernalia 	Δ Slurred speech, disorientation, drunken behavior without odor of alcohol 	Shallow respiration, cold and clammy skin, dilated pupils, weak and rapid pulse, coma, possible death	◇ Common Benzodiazepines and/or specific metabolites: Oxazepam, Nordiazepam, Temazepam (Restoril), Flurazepam (Dalmane), Alprazolam (Xanax), Lorazepam (Ativan), Chlordiazepoxide (Librium), Clorazepate (Tranxene), Diazepam (Valium), Halazepam (Paxipam), Medazepam (Nobrium), Prazepam (Centrax), Flunitrazepam, Clonazepam (Klonopin), Midazolam (Versed) ▲ Urine: varies from 1 to 14 days (depending on specific Benzodiazepine)	
Methadone <ul style="list-style-type: none"> • Done • Dolophine • Methadose • Dolls 	<ul style="list-style-type: none"> • White crystalline powder, tablets, liquid (injectable) 	Δ Euphoria, drowsiness, respiratory depression, constricted pupils, nausea	Slow and/or shallow breathing, clammy skin, convulsions, coma, possible death	◇ Methadone and metabolite ▲ Urine: 1 to 3 days	
Methaqualone <ul style="list-style-type: none"> • Ludes • Sopor • Lemmon • Quaalude • Mequin 	<ul style="list-style-type: none"> • Tablets 	Δ Slow heart rate and breathing, lowered blood pressure, sleepiness, feelings of well-being, loss of coordination, laziness, impaired perception, confusion, later hangover	Anxiety, insomnia 	◇ Methaqualone ▲ Urine: 1 to 7 days	
Propoxyphene	<ul style="list-style-type: none"> • Tablets, capsules 	Δ Dizziness, drowsiness, headache, euphoria, dysphoria, asthenia	Skin rash and other allergic reactions occur occasionally and may be accompanied by drug fever and mucosal lesions, stupor, or coma, convulsions, respiratory depression	◇ Norpropoxyphene ▲ Urine: 1 to 3 days	
GHB <ul style="list-style-type: none"> • Liquid Ecstasy • Liquid-X • Everclear • Soap • Easy lay • Goops • Georgia home boy 	<ul style="list-style-type: none"> • White odorless powder, tablet or capsule 	Δ Relaxes or sedates the body and slows breathing and heart rate	Bradycardia, respiratory depression, hallucinations, amnesia	◇ Gamma hydroxybutyrate ▲ Urine: up to 72 hours	
Rohypnol <ul style="list-style-type: none"> • Rophies • Roofies • Roach • Rope • Circles • Mexican valium 	<ul style="list-style-type: none"> • Odorless, tasteless, white tablet 	Δ The drug produces sedative effects, including amnesia, muscle relaxation and the slowing of psychomotor performance	Respiratory depression, hypotension, disorientation, dizziness, visual disturbances, anterograde amnesia	◇ Flunitrazepam metabolite (7-Aminoflunitrazepam) ▲ Urine: 1 to 3 days	
Ketamine <ul style="list-style-type: none"> • Special K • Lady Kay • Vitamin K • Jet • K • Keets • Super C • Cat valium • K-hole 	<ul style="list-style-type: none"> • Liquid or white powder 	Δ It is a dissociative drug that produces effects similar to PCP, large doses put users into a dreamlike, hallucinogenic state	Tachycardia, hypertension, nystagmus, respiratory depression, visual hallucinations, cataleptic state	◇ Ketamine metabolite (dehydronorketamine) ▲ Urine: 1 to 2 days	
LSD <ul style="list-style-type: none"> • Acid • L • Blotter • Trips • Cid • Tabs • Microdots 	<ul style="list-style-type: none"> • Colorless, odorless tablets or capsules (microdots), liquid solution on gelatin (window panes), liquid solution diluted and impregnated on blotting paper (blotter) 	Δ Mood-altering effects, flashbacks, severe depression	Tachycardia, hypertension, hyperthermia, mydriasis, lacrimation, visual hallucinations, syntheses ataxia, tremors	◇ Lysergic acid diethylamide ▲ Urine: 8 hours	
Anabolic Steroids <ul style="list-style-type: none"> • Testosterone and its synthetic analogs listed as controlled substances. Androstendols, Androstenediones, their 19-nor versions, Dehydroepiandrosterone, Designer anabolic steroids 	<ul style="list-style-type: none"> • Oil based injectable IM solutions (ampoules, vials, syringes, bottles), tablets or lozenges for oral administration, sprays, skin lotions. 	Δ Yellow tint skin color, acne, gynecomastia, gain in weight, accumulation of fluids, psychological disorders such as aggressiveness. In females: marked masculinization, deeper voice, male-pattern hair growth	Liver dysfunction, cardiovascular disease, hypertension, infertility	◇ Multiple metabolites, some parent steroids. Testosterone to epitestosterone ratio (T/E) for detection of endogenous steroids abuse ▲ Urine: (if drug taken orally): up to 3 weeks; (if drug injected): 3 months up to 1 year	